

### Best Nest Organizer Basket

Keep all the things you love (or use often) handy and well organized. A hanging basket for each member of the family will keep the entryway clean and neat. Or, use the pattern to make your own homemade Easter baskets, by embellishing the Easter basket with embroidered names and hang them on bedroom doors.

#### Supplies Needed:

- ½ yd. Fabric A (front)
- ½ yd. Fabric B (lining)
- ⅓ yd. Fabric C (binding)
- ½ yd. batting
- Quilting thread
- Coordinating all-purpose thread

#### Helpful Notions:

- Wonder Clips
- Spray starch or starch alternative, such as Best Press®
- Fabric marking pen or pencil
- Optional: curved basting pins, size 1
- Optional: quilt basting spray

#### Instructions:

Read all instructions before beginning project. All seam allowances are ¼", unless otherwise stated.

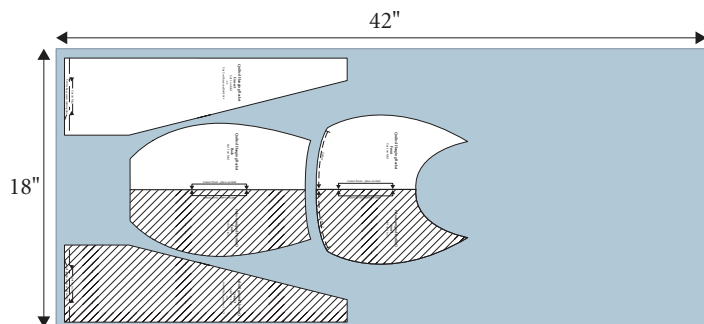
##### 1. Prepare the fabric:

- Stabilize all fabrics well using spray starch or starch alternative. Let fabric dry completely before using.
- Layer and quilt the front and lining fabrics using your favorite method.

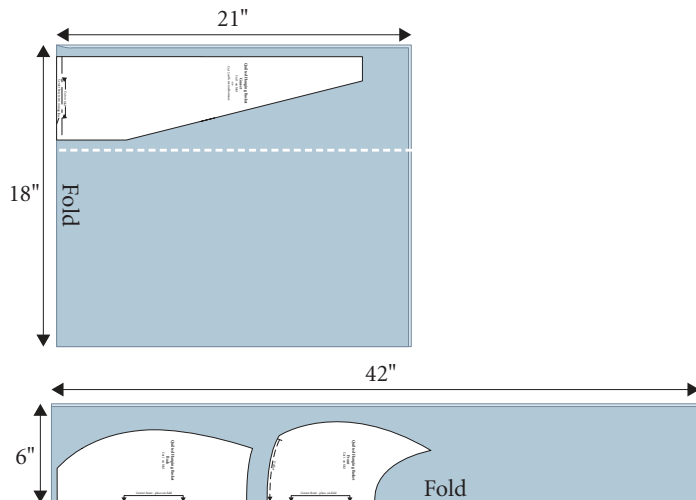
*Note: To layer and quilt follow our online instructions, "How to make your own double-faced quilted fabric."*

##### 2. Cut and mark basket and binding pieces:

- Cut paper pattern from included PDF.
- Lay out and cut the pattern pieces following one of the suggested options:
  - Layout Option 1:



##### - Layout Option 2:



- Mark, using a fabric marking pen or pencil, the guidelines for gathering as indicated on the front pattern piece.
- From binding fabric, cut 2¼" wide bias strips to equal approximately 118" to 120".

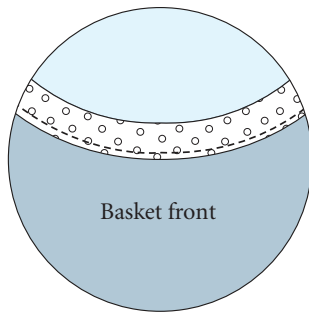
##### 3. Create the binding:

- Join binding strips, end to end, using a diagonal seam to reduce bulk. Press seams flat, then open. Trim the seam allowances to ¼", if needed.
- Press the binding in half, meeting long edges even. Careful not to stretch the fabric as you press.



#### 4. Assemble the hanging basket:

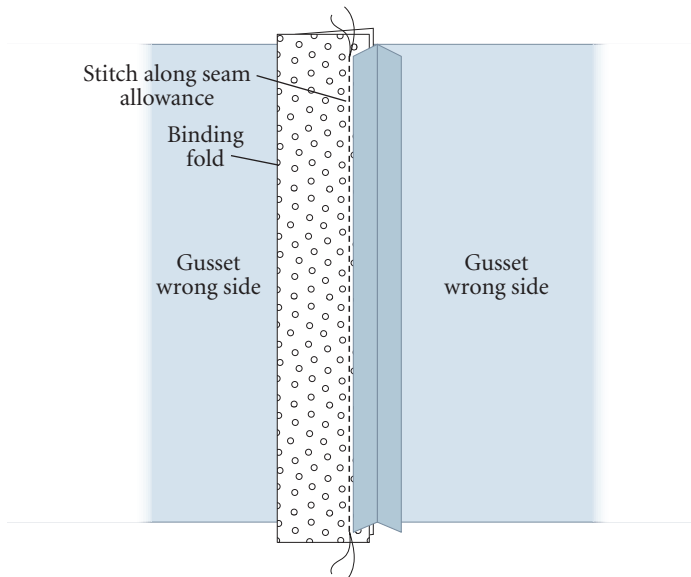
- Bind the upper edges of the basket front and back:
  - Align binding cut edges to lining side of basket front piece.
  - Stitch with a generous  $\frac{1}{4}$ " seam.
  - Press binding toward seam allowance.
  - Bring binding to the right side, clip in place using Wonder Clips.
  - Edgestitch fold edge of binding to conceal the seam allowance.



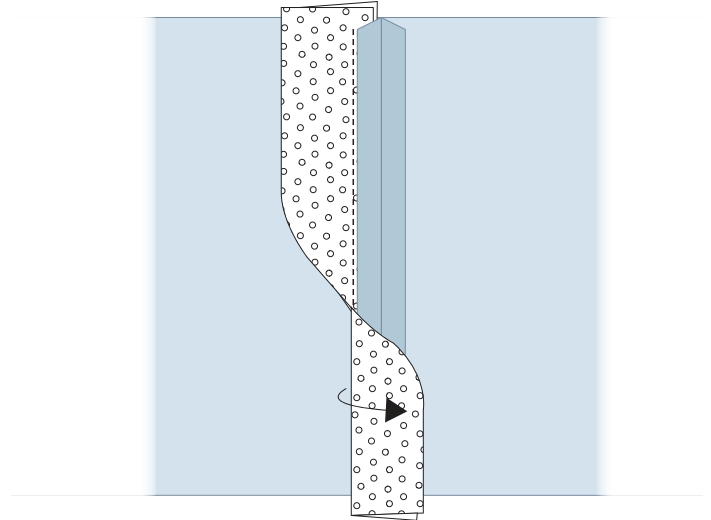
- Repeat steps for remaining basket back piece.
- Stitch and finish gusset seams:

*Note: If gusset piece was cut in two pieces (following Layout Option 1), place the pieces right side together and stitch the center base line using a  $\frac{1}{4}$ " seam. Press seam open.*

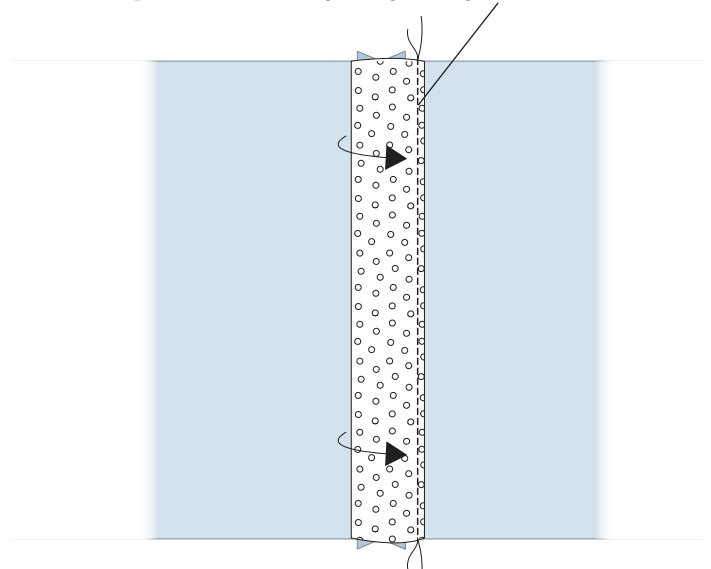
- Align narrow ends of gusset, right sides together. Stitch  $\frac{1}{4}$ " seam. Press seam flat, then open.
- Finish seam allowance using the binding made in step 3:
  - \* Tuck the cut edge of the binding under the left hand seam allowance. Stitch along the pressed seam allowance without stitching into it.



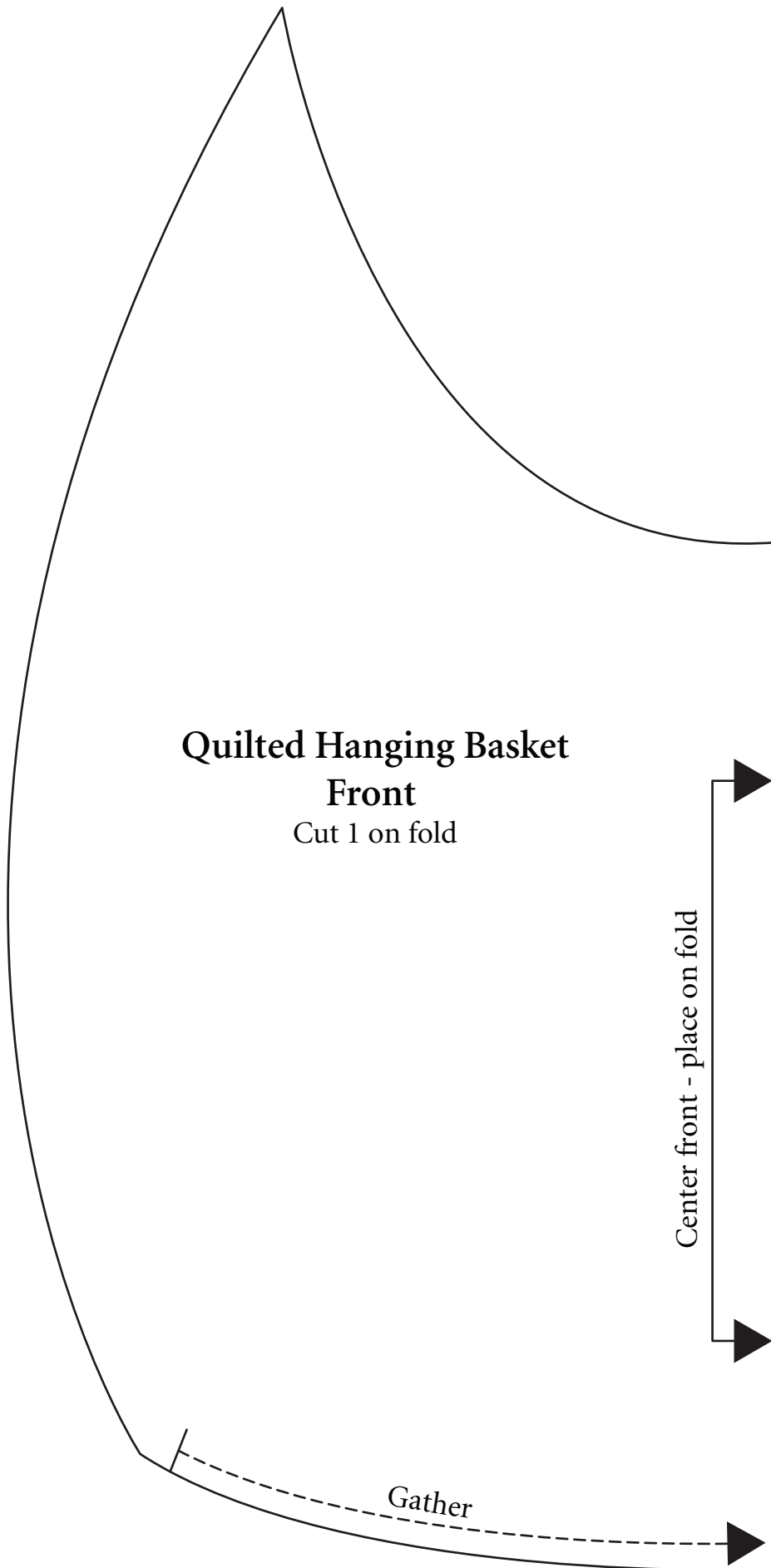
- Press flat, and then press the binding over, covering the open flat seam allowances.



- Topstitch the binding along the right hand side.



- Repeat steps for lower gusset seam, unless gusset was cut on the fold.
- Gather the seam front along lower edge between the marked guidelines indicated on the front pattern piece.
- Position and pin basket front and back to gusset:
  - Meeting lining sides together. Align center front of basket to lower center front seam of gusset.
  - Baste the layers together using a **scant**  $\frac{1}{4}$ " seam allowance.
  - Repeat steps adding the basket back to the gusset.
- Bind edges:
  - For the front binding edge, stitch the binding with the **gusset facing up**. The edgestitching will then be neat on the front of your basket.
  - For the back binding edge, stitch with the **gusset facing down**. Edge stitching will be the neatest on the gusset which is more visible than the back of the basket.



# **Quilted Hanging Basket** **Back** Cut 1 on fold

Center front - place on fold

